

LED PROFILE SMART16 BC3/U4 2000 ANOD.



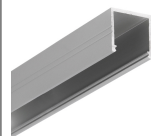
Surface



Furniture



max 16 mm



- Slick socket
- easy assembly technology
- 2 channels for mounting bracket
- 2 channels for mounting bracket (with or without mounting surface distance)
- continuous line of light (when using LED strip 120 P/m and opal diffuser)



CE



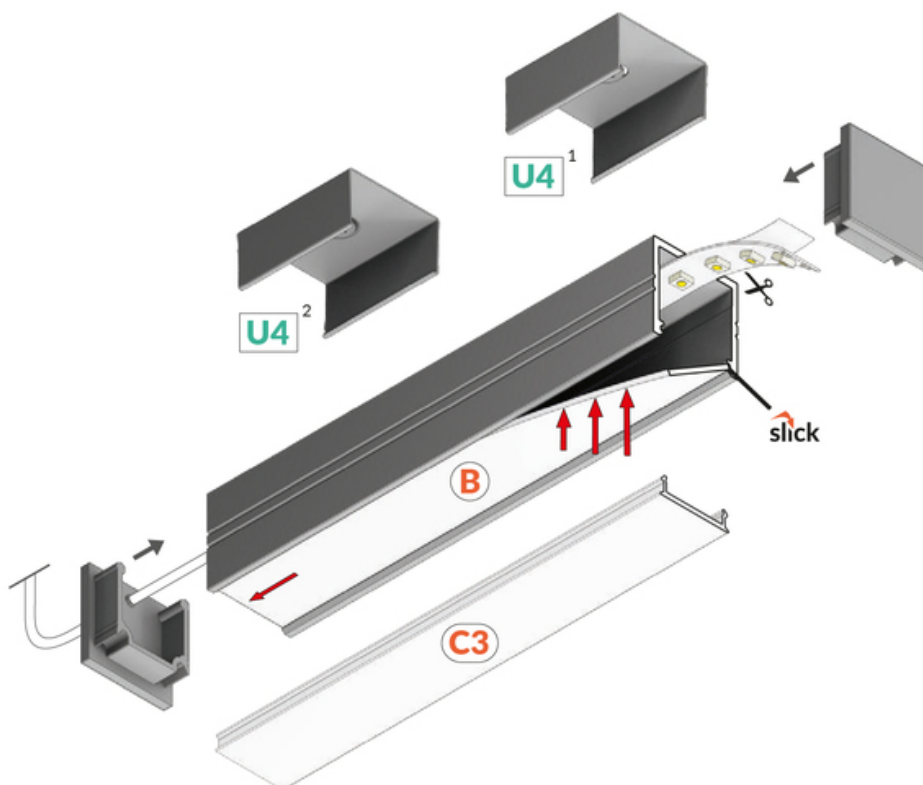
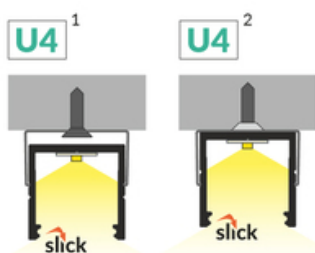
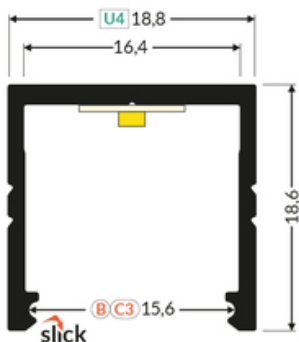
EU industrial designs



Made in Poland



Buy product



TOPMET LIGHT KŁOSOWICZ WIŚNIEWSKI sp. z o.o.

Ostrowska 354 | 61-312 Poznań | POLAND

tel.: +48 61 872 75 00

info@topmet.pl

pdf card generation date: 10.03.2025

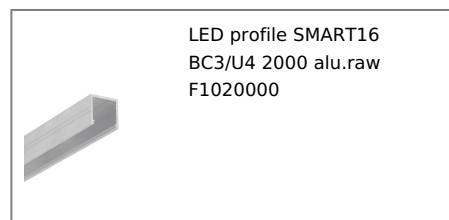
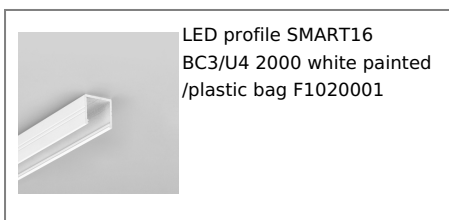




Basic Informations

EAN: 5901597243731 Index: F1020020 Material: aluminium Color: anodized Length [mm]: 2000 Weight [kg]: 0.402 Net weight [kg]: 0.018 Country of origin: PL	Measurement unit: qty Product packaging dimensions [mm]: 2000 x 18,8 x 18,6 Bulk packing [qty]: 40 Master packaging type: Bulk Product with gross packaging weight [kg]: 16.08
---	--

AVAILABLE COLORS

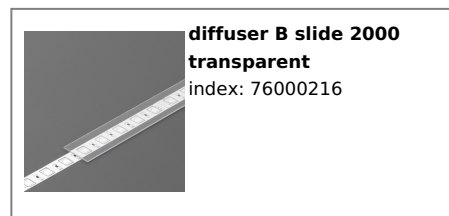
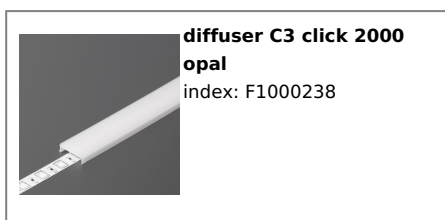


AVAILABLE VARIANTS

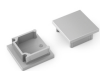
1000 mm, 2000 mm, 3000 mm, 4050 mm

Matching elements

DIFFUSERS



END CAPS



**end cap SMART16-BC3
silver [20pcs]**
index: F1999940



**end cap SMART16-BC3
grey [20pcs]**
index: F1999922

MOUNTING PLATES



**mounting plate U4 cone
inox [20pcs]**
index: F1980019