

LED PROFILE GROOVE10.V2 A1C/U 2000 BLACK ANOD.

/PLASTIC BAG



Furniture



max 10 mm



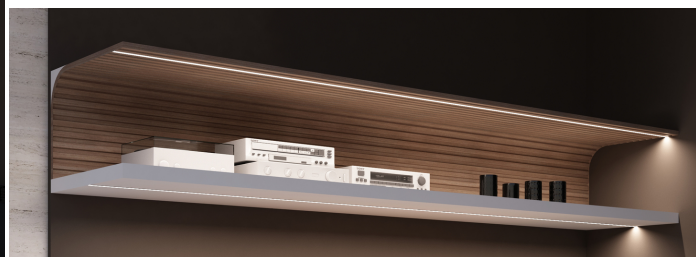
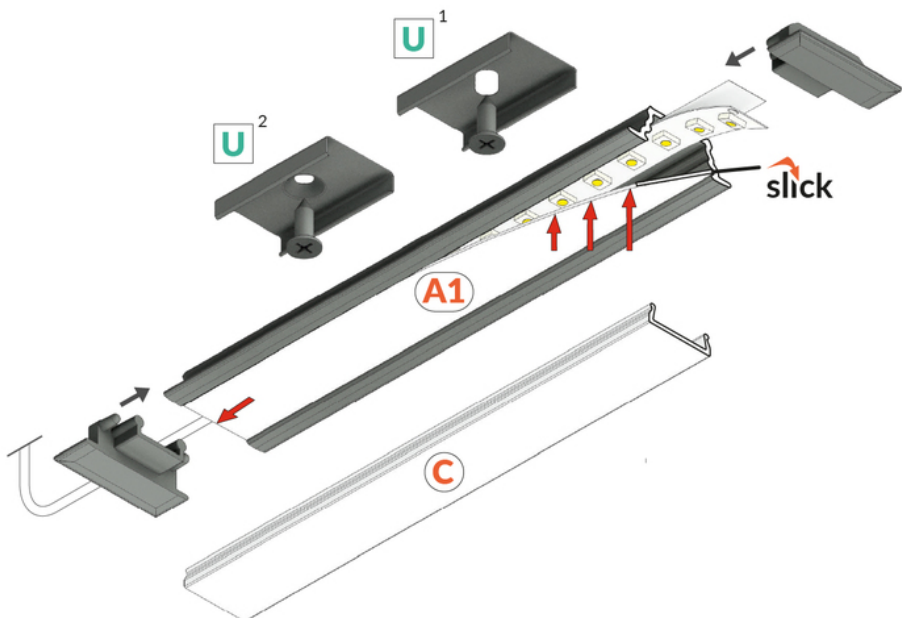
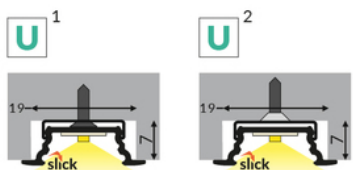
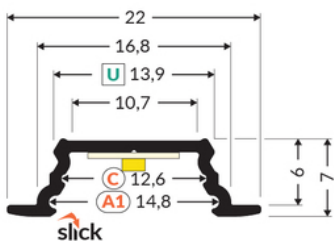
Recessed

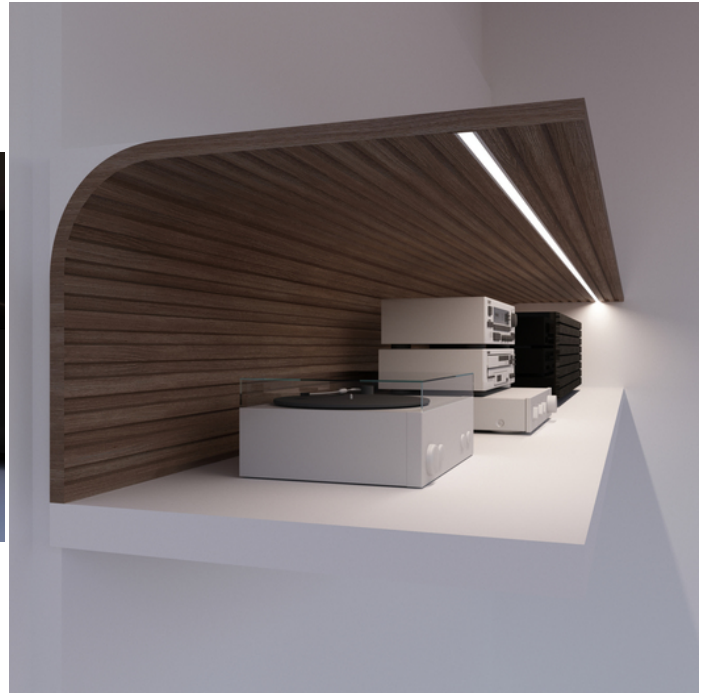


- a new generation of recessed profiles
- basic and aesthetically pleasing furniture profile
- shallow mounting hole depth

EU industrial designs
 CE
 Made in Poland

Buy product

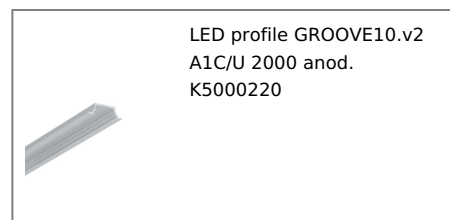
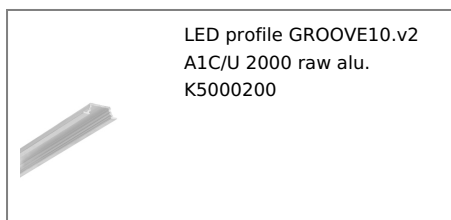




Basic Informations

| | |
|--|--|
| EAN: 5901597231486 Index: K5000221 Material: aluminium Color: black anodized Lenght [mm]: 2000 Weigh [kg]t: 0.19 Net weight [kg]: 0.006 Country of origin: PL | Measurement unit: qty Product packaging dimensions [mm]: 2000 x 22 x 7 Bulk packing [qty]: 40 Master packaging type: Carton Product with gross packaging weight [kg]: 8.66 |
|--|--|

AVAILABLE COLORS

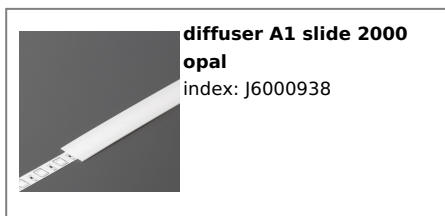
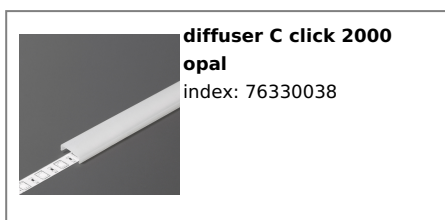
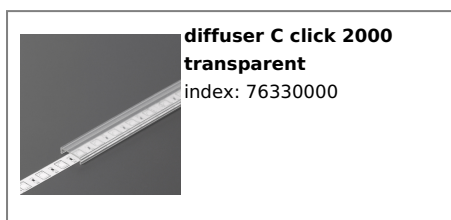


AVAILABLE VARIANTS

2000 mm, 4050 mm

Matching elements

DIFFUSERS



TOPMET LIGHT KŁOSOWICZ WIŚNIEWSKI sp. z o.o.

Ostrowska 354 | 61-312 Poznań | POLAND

tel.: +48 61 872 75 00

info@topmet.pl

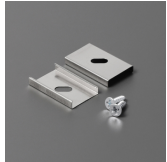
pdf card generation date: 10.03.2025



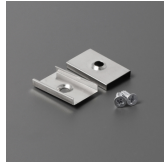


**diffuser A1 slide 2000
transparent**
index: J6000916

MOUNTINGS



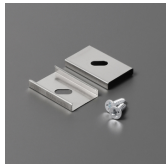
**mounting plate U inox
[500pcs]**
index: 76380000W



**mounting plate U cone
inox [500pcs]**
index: 76620000W



**mounting plate U cone
inox [20pcs]**
index: 76620000



**mounting plate U inox
[20pcs]**
index: 76380000

END CAPS



**end cap GROOVE10.v2
with hole black [20pcs]**
index: K5999902