

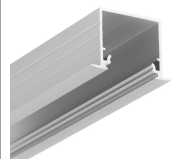
LED PROFILE LINEA-IN20 EE7F/U7 1000 ANOD.



Recessed



Architectural



- continuous line of light (when using LED strip 120 P/m and opal diffuser)
- angled connections illuminated
- over 20 accessories available



CE



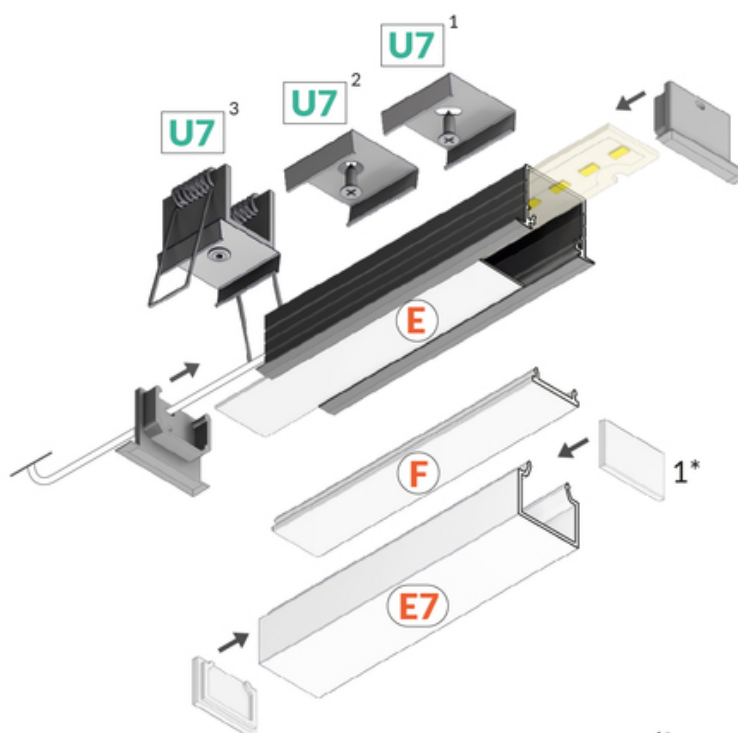
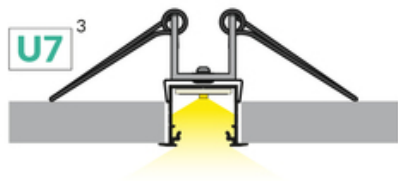
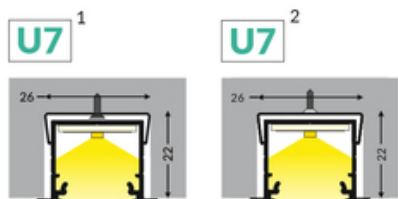
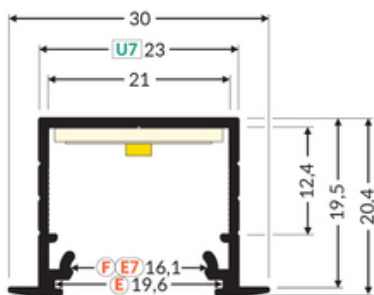
EU industrial designs



Made in Poland



Buy product



1*
end cap E7
zaślepka E7

TOPMET LIGHT KŁOSOWICZ WIŚNIEWSKI sp. z o.o.

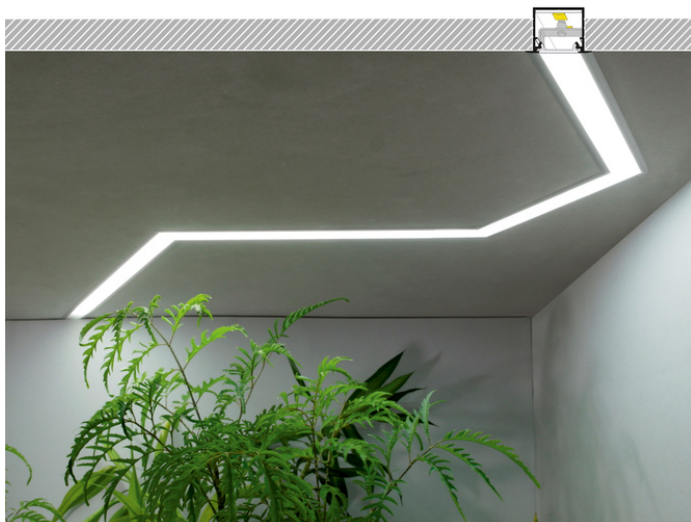
Ostrowska 354 | 61-312 Poznań | POLAND

tel.: +48 61 872 75 00

info@topmet.pl

pdf card generation date: 08.03.2025





Basic Informations

EAN: 5901597237266

Index: E4010020

Material: aluminium

Color: anodized

Length [mm]: 1000

Weight [kg]: 0.218

Country of origin: PL

Measurement unit: qty

Product packaging dimensions [mm]: 1000 x 30 x 20,4

Bulk packing [qty]: 20

Master packaging type: Bulk

Product with gross packaging weight [kg]: 4.36

AVAILABLE COLORS



AVAILABLE VARIANTS

1000 mm, 2000 mm, 3000 mm, 4050 mm

Matching elements

DIFFUSERS

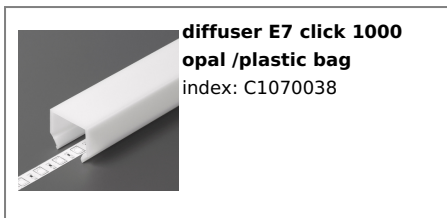
TOPMET LIGHT KŁOSOWICZ WIŚNIEWSKI sp. z o.o.

Ostrowska 354 | 61-312 Poznań | POLAND

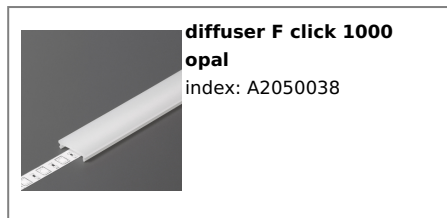
tel.: +48 61 872 75 00

info@topmet.pl

pdf card generation date: 08.03.2025



**diffuser E7 click 1000
opal /plastic bag**
index: C1070038



**diffuser F click 1000
opal**
index: A2050038



**diffuser F click 1000
transparent**
index: A2050016



**diffuser F click 20m reel
opal /pack**
index: A2210038S



**diffuser E slide 1000
opal**
index: A2000138

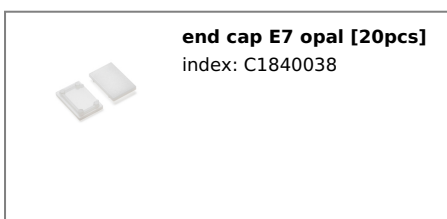


**diffuser E slide 1000
frosted**
index: A2000139

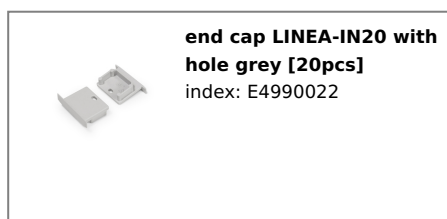


**diffuser E slide 1000
transparent**
index: A2000116

END CAPS



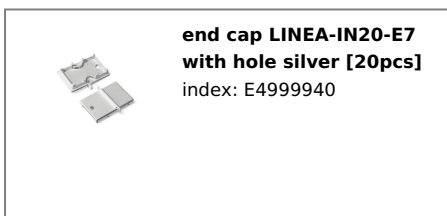
end cap E7 opal [20pcs]
index: C1840038



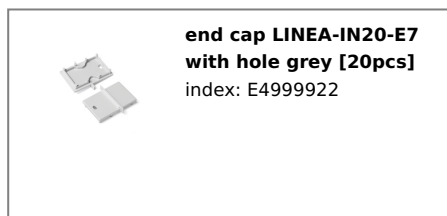
**end cap LINEA-IN20 with
hole grey [20pcs]**
index: E4990022



**end cap LINEA-IN20 with
hole silver [20pcs]**
index: E4990040

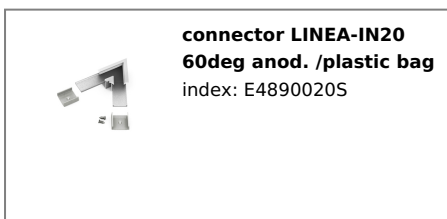


**end cap LINEA-IN20-E7
with hole silver [20pcs]**
index: E4999940



**end cap LINEA-IN20-E7
with hole grey [20pcs]**
index: E4999922

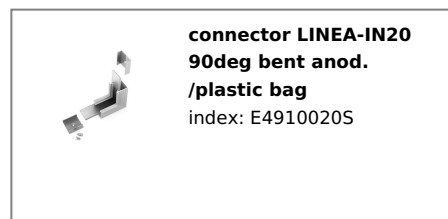
CONNECTORS



**connector LINEA-IN20
60deg anod. /plastic bag**
index: E4890020S



**connector LINEA-IN20
90deg anod. /plastic bag**
index: E4900020S



**connector LINEA-IN20
90deg bent anod.
/plastic bag**
index: E4910020S



**connector LINEA-IN20
120deg anod. /plastic
bag**
index: E4920020S



**connector LINEA-IN20
135deg anod. /plastic
bag**
index: E4930020S



**connector LINEA-IN20
180deg /plastic bag**
index: E4940000s



**connector LINEA-IN20
270deg bent anod.
/plastic bag**
index: E4950020S

OTHER



**LED clamp LINEA20
white painted [20pcs]**
index: C6940001



**LINEA20-1 LED clamp
white [20pcs]**
index: C6930001